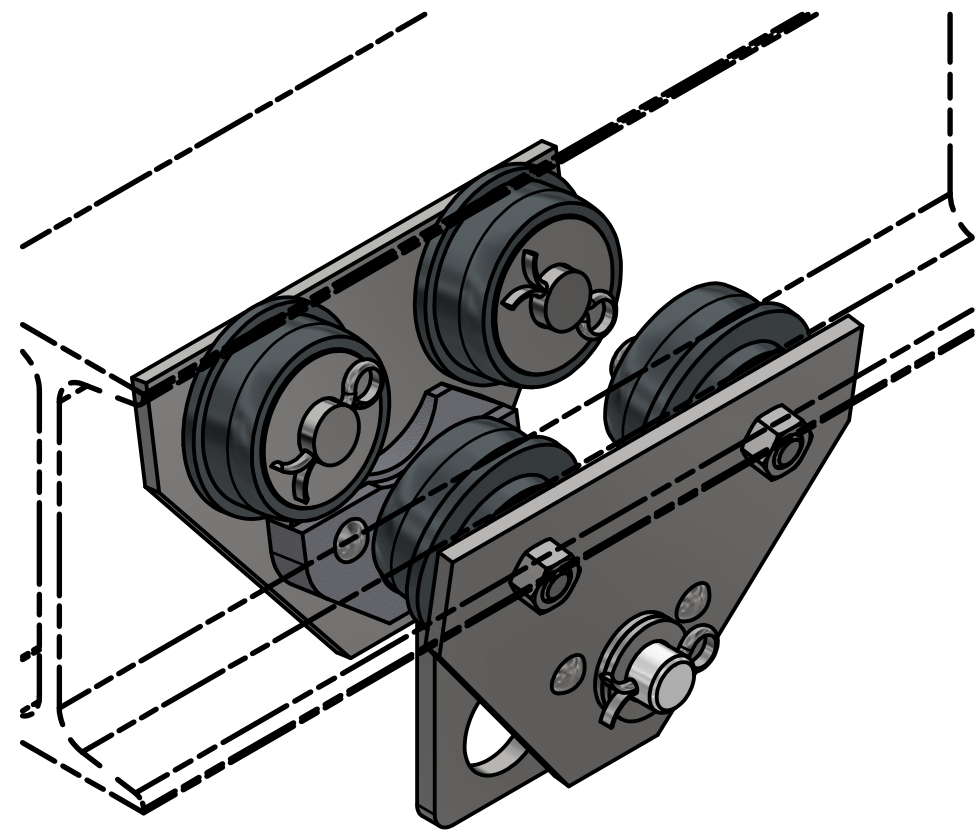


PARTS LIST				
ITEM	QTY	PART NUMBER	MATERIAL	DESCRIPTION
1	2	SIDE PLATE SUB-ASSEMBLY		
1.1	1 (2 TOTAL)	SIDE PLATE	MILD STEEL	
1.2	1	GUIDE	CAST IRON	
1.3		RIVET	STANDARD	BUTTON HEAD, Ø10 X 60 LONG
2	1	AXLE	COLD ROLLED STEEL	
3	1	HOOK	MILD STEEL	10 THICK
4	44	ROLLER BEARING	COLD ROLLED STEEL	Ø10 X 38 LONG
5	4	WHEEL	CAST IRON	
6	4	WHEEL AXLE	COLD ROLLED STEEL	
7	12	ADJUSTING WASHER	STANDARD	Ø26 ID X Ø44 OD X 4 THICK
8	4	WASHER	STANDARD	Ø26 ID X Ø65 OD X 3 THICK
9	4	LOCKNUT	STANDARD	M16 x 2 (PREVAILING TORQUE INSERT-TYPE)
10	6	COTTER PIN	STANDARD	Ø6 X 40 LONG



DIGITAL DESIGN  
GRAPHICS  
TECHNOLOGY

WWW.DDGT.NET



TROLLEY ASSEMBLY  
SCALE 1/3

**GENERAL NOTES:**

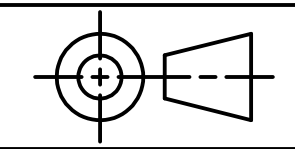
TROLLEY TO BE MOUNTED ON AN S200 X 34 BEAM.

ALL CHAMFERS ARE 2 X 2 UNLESS OTHERWISE NOTED.

**METRIC**

**LEGEND:**

Ø DIAMETER  
R RADIUS  
° DEGREES



TOLERANCES UNLESS SPECIFIED:  
DECIMAL INCHES  
X = ±.020  
XX = ±.010  
XXX = ±.005  
FRACTIONAL ±1/64"  
ANGLES ±1 DEGREE  
SURFACES 32✓

CLASS: DDGT 120

ASSIGNMENT #: 70

INVENTOR DRAWING NAME:  
TROLLEY

FIG #: 14-83

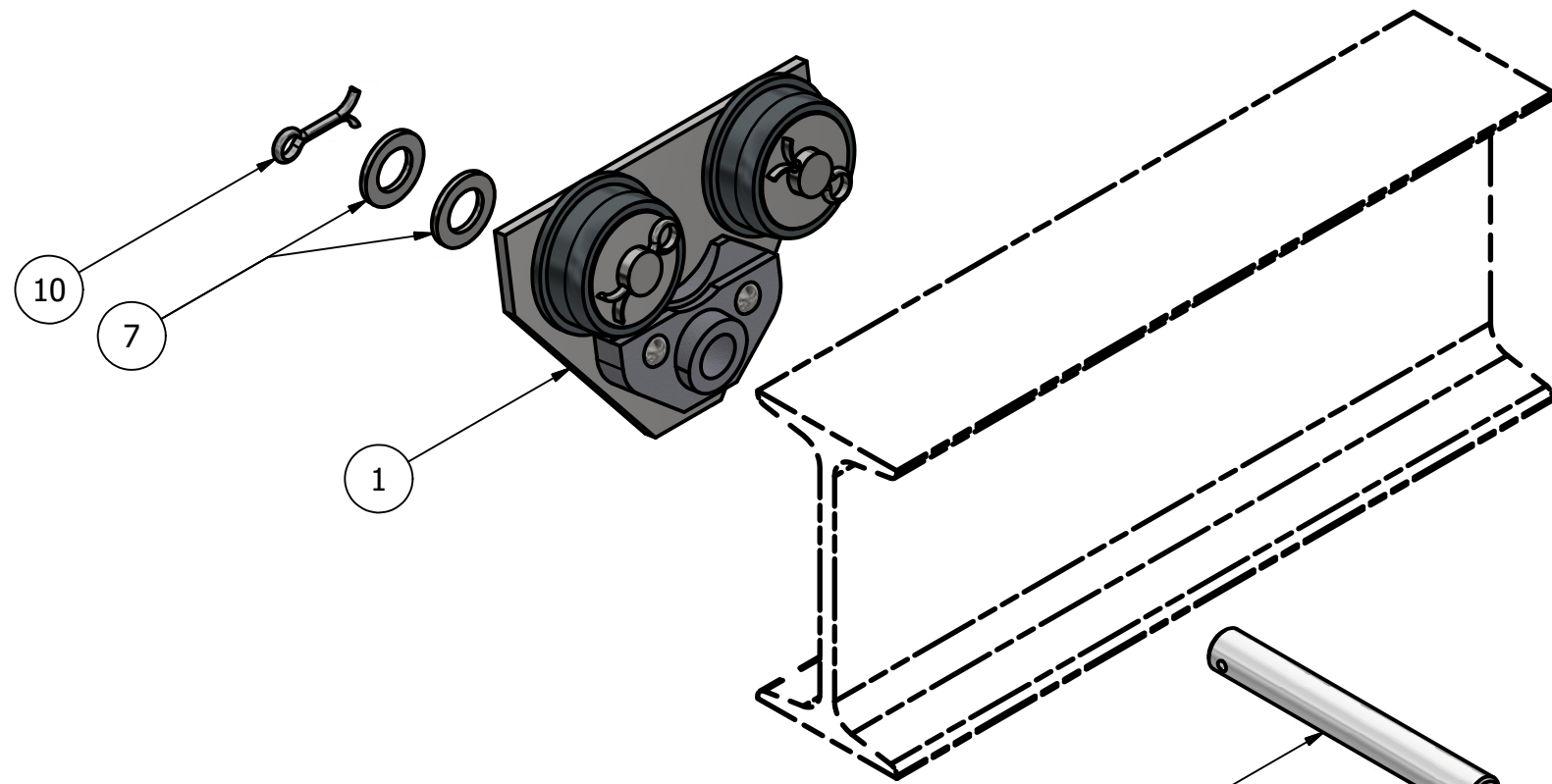
MANAGER: G. STROMMEN

DRAFTER: J. JORDAN

DATE: 12/10/2025

SCALE: AS NOTED

PAGE #: 1 OF 6



PARTS LIST		
ITEM	QTY	PART NUMBER
1	2	SIDE PLATE SUB-ASSEMBLY
2	1	AXLE
3	1	HOOK
7	12	ADJUSTING WASHER
10	6	COTTER PIN



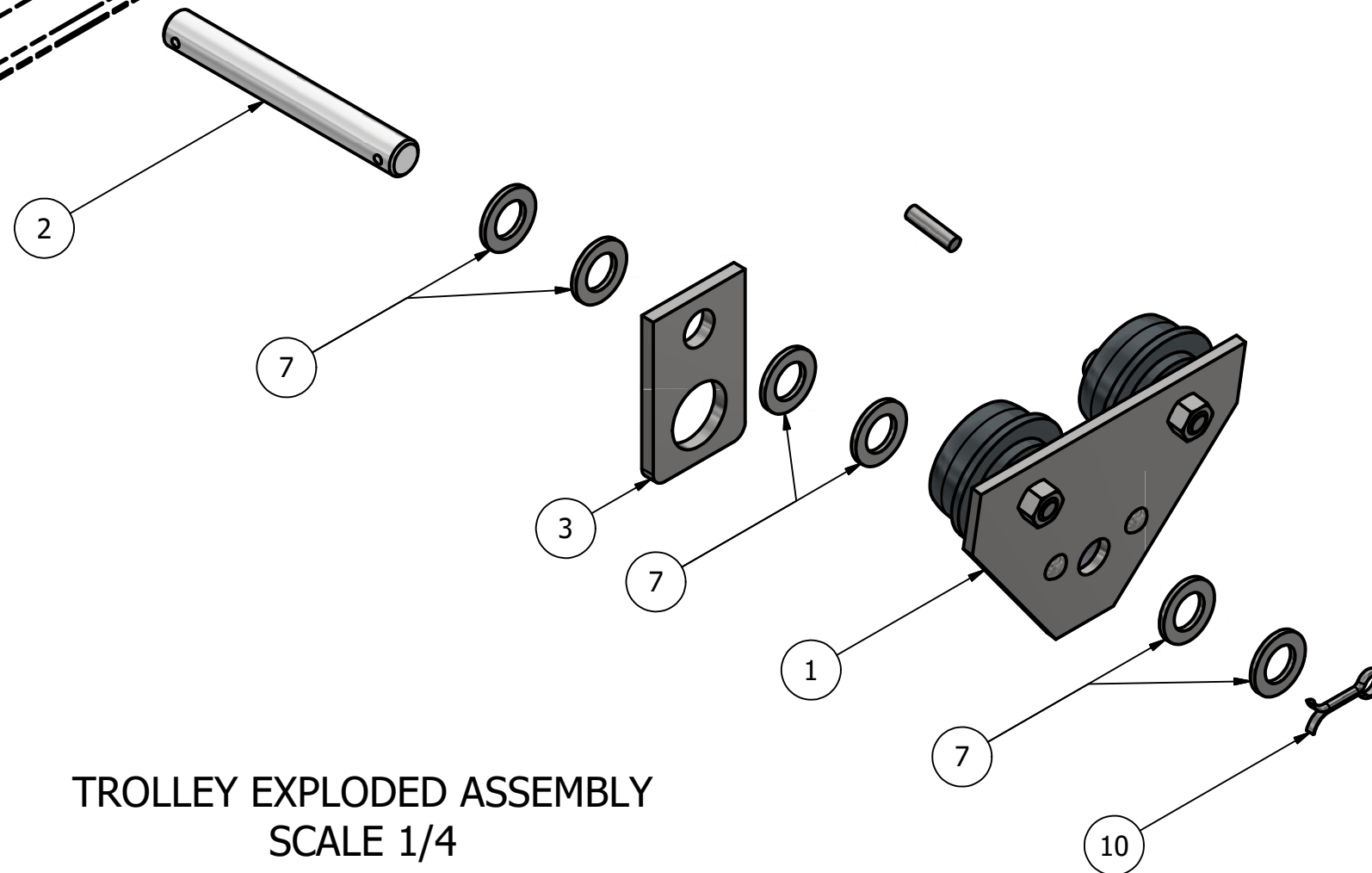
DIGITAL DESIGN  
GRAPHICS  
TECHNOLOGY

WWW.DDGT.NET

### GENERAL NOTES:

TROLLEY TO BE MOUNTED ON AN S200 X 34 BEAM.

ALL CHAMFERS ARE 2 X 2 UNLESS OTHERWISE NOTED.

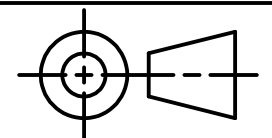


**METRIC**

TROLLEY EXPLODED ASSEMBLY  
SCALE 1/4

### LEGEND:

Ø DIAMETER  
R RADIUS  
° DEGREES



TOLERANCES UNLESS SPECIFIED:  
DECIMAL INCHES  
X = ±.020  
XX = ±.010  
XXX = ±.005  
FRACTIONAL ±1/64"  
ANGLES ±1 DEGREE  
SURFACES 32✓

CLASS: DDGT 120

ASSIGNMENT #: 70

INVENTOR DRAWING NAME:  
TROLLEY

FIG #: 14-83

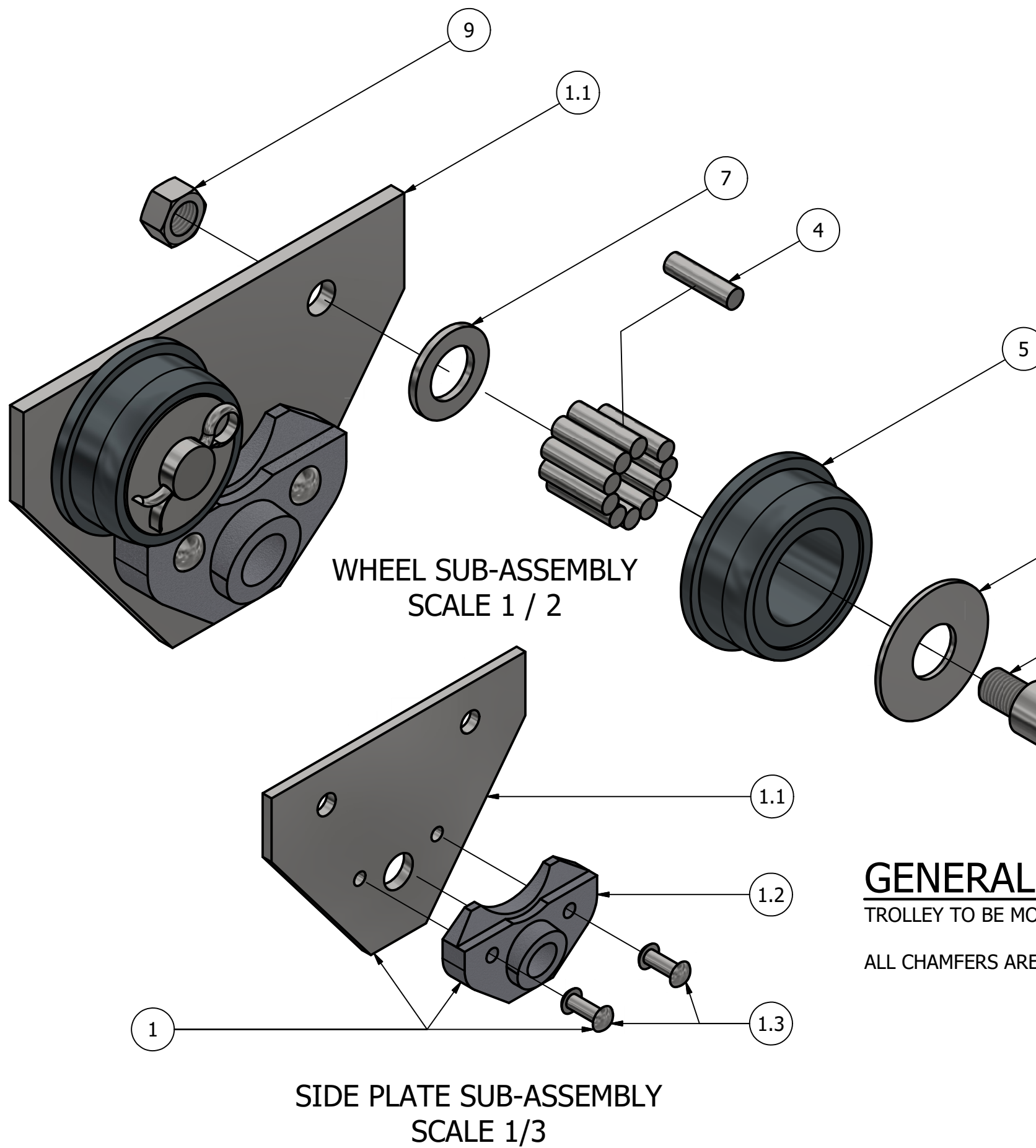
MANAGER: G. STROMMEN

DRAFTER: J. JORDAN

DATE: 12/10/2025

SCALE: AS NOTED

PAGE #: 2 OF 6

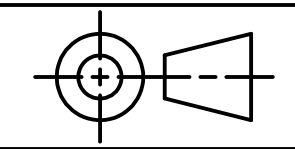


PARTS LIST		
ITEM	QTY	PART NUMBER
1	2	SIDE PLATE SUB-ASSEMBLY
1.1	1 (2 TOTAL)	SIDE PLATE
1.2	1	GUIDE
1.3		RIVET
4	44	ROLLER BEARING
5	4	WHEEL
6	4	WHEEL AXLE
7	12	ADJUSTING WASHER
8	4	WASHER
9	4	LOCKNUT
10	6	COTTER PIN



DIGITAL DESIGN  
GRAPHICS  
TECHNOLOGY

WWW.DDGT.NET



TOLERANCES UNLESS SPECIFIED:  
DECIMAL INCHES  
X = ±.020  
XX = ±.010  
XXX = ±.005  
FRACTIONAL ±1/64"  
ANGLES ±1 DEGREE  
SURFACES 32✓

CLASS: DDGT 120

ASSIGNMENT #: 70

INVENTOR DRAWING NAME:  
TROLLEY

FIG #: 14-83

MANAGER: G. STROMMEN

DRAFTER: J. JORDAN

DATE: 12/10/2025

SCALE: AS NOTED

PAGE #: 3 OF 6

### GENERAL NOTES:

TROLLEY TO BE MOUNTED ON AN S200 X 34 BEAM.

ALL CHAMFERS ARE 2 X 2 UNLESS OTHERWISE NOTED.

**METRIC**

### LEGEND:

Ø DIAMETER  
R RADIUS  
° DEGREES

PARTS LIST			
ITEM	QTY	PART NUMBER	DESCRIPTION
1	2	SIDE PLATE SUB-ASSEMBLY	



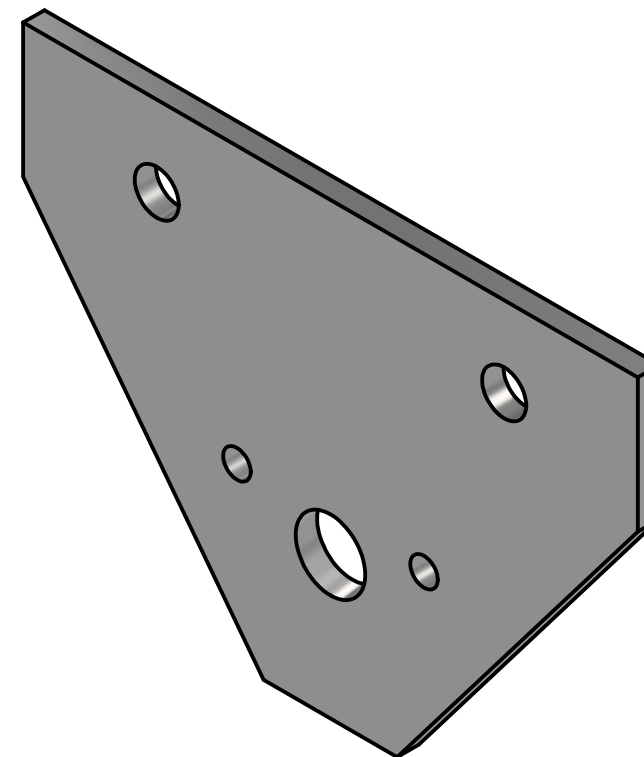
DIGITAL DESIGN  
GRAPHICS  
TECHNOLOGY

WWW.DDGT.NET

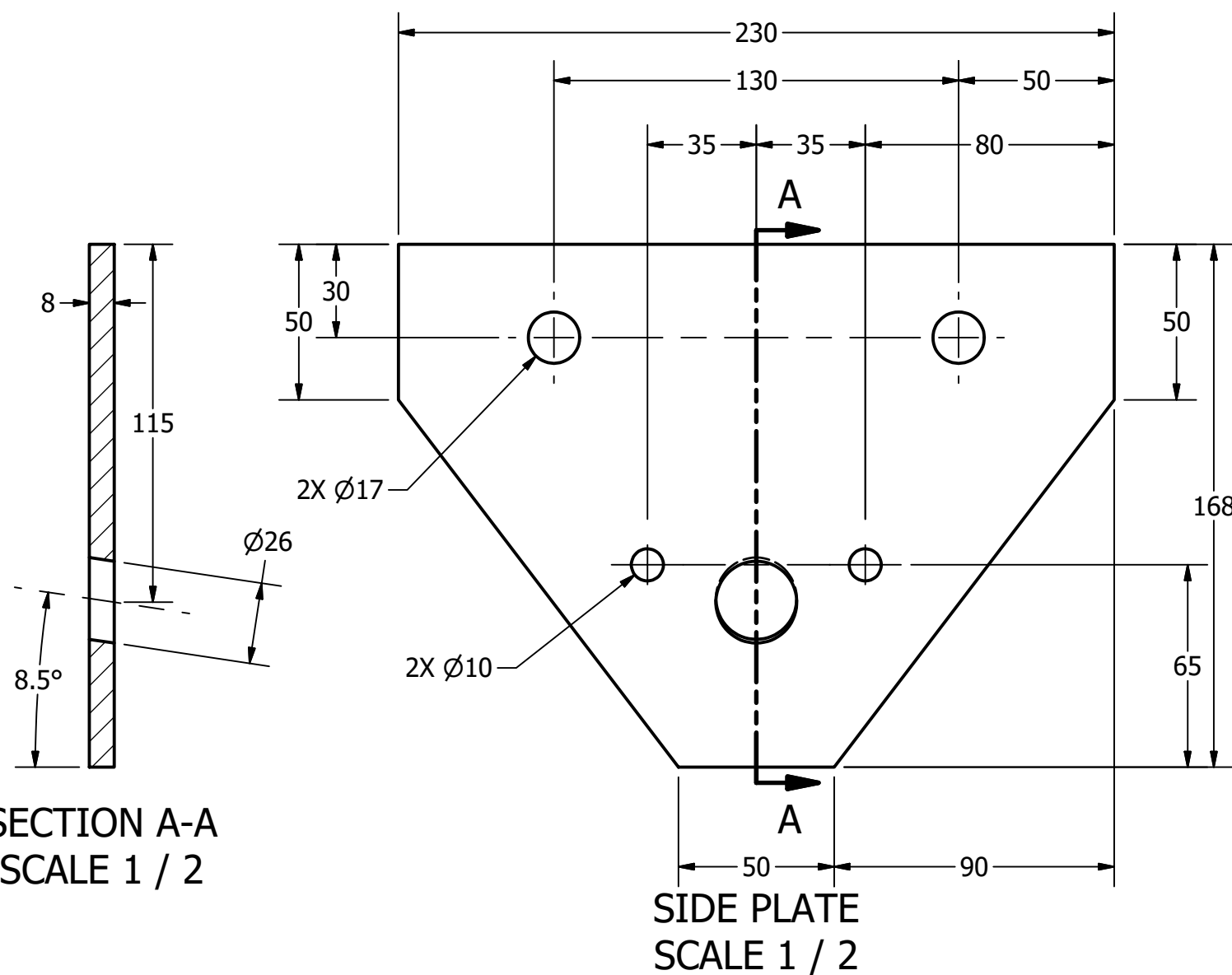
### GENERAL NOTES:

TROLLEY TO BE MOUNTED ON AN S200 X 34 BEAM.

ALL CHAMFERS ARE 2 X 2 UNLESS OTHERWISE NOTED.

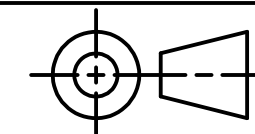


**METRIC**



SECTION A-A  
SCALE 1 / 2

SIDE PLATE  
SCALE 1 / 2



TOLERANCES UNLESS SPECIFIED:  
DECIMAL INCHES  
X = ±.020  
XX = ±.010  
XXX = ±.005  
FRACTIONAL ±1/64"  
ANGLES ±1 DEGREE  
SURFACES 32✓

CLASS: DDGT 120

ASSIGNMENT #: 70

INVENTOR DRAWING NAME:  
TROLLEY

FIG #: 14-83

MANAGER: G. STROMMEN

DRAFTER: J. JORDAN

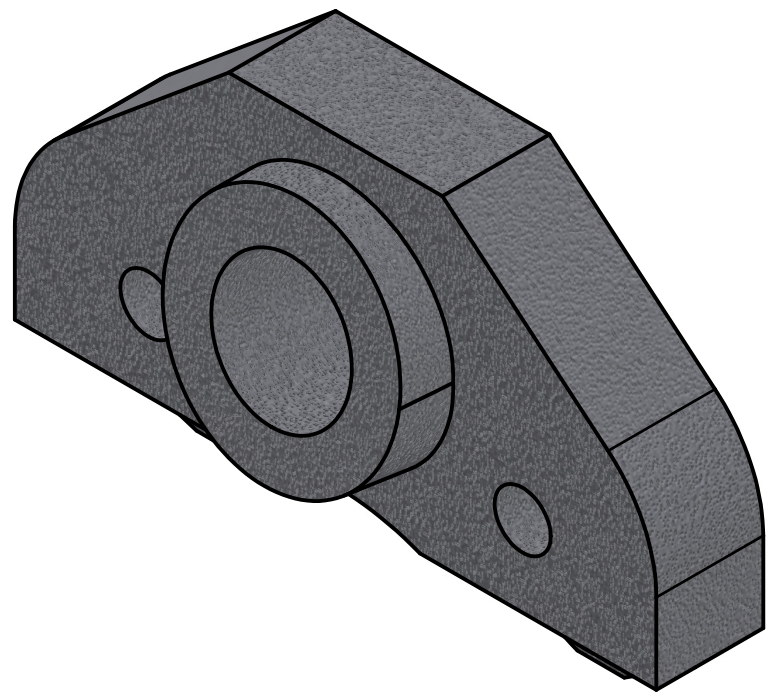
DATE: 12/10/2025

SCALE: AS NOTED

PAGE #: 4 OF 6

### LEGEND:

Ø DIAMETER  
R RADIUS  
° DEGREES



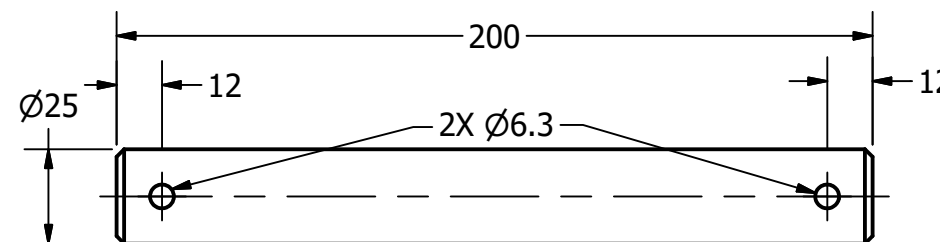
**METRIC**

PARTS LIST		
ITEM	QTY	PART NUMBER
1.2	2	GUIDE
2	1	AXLE

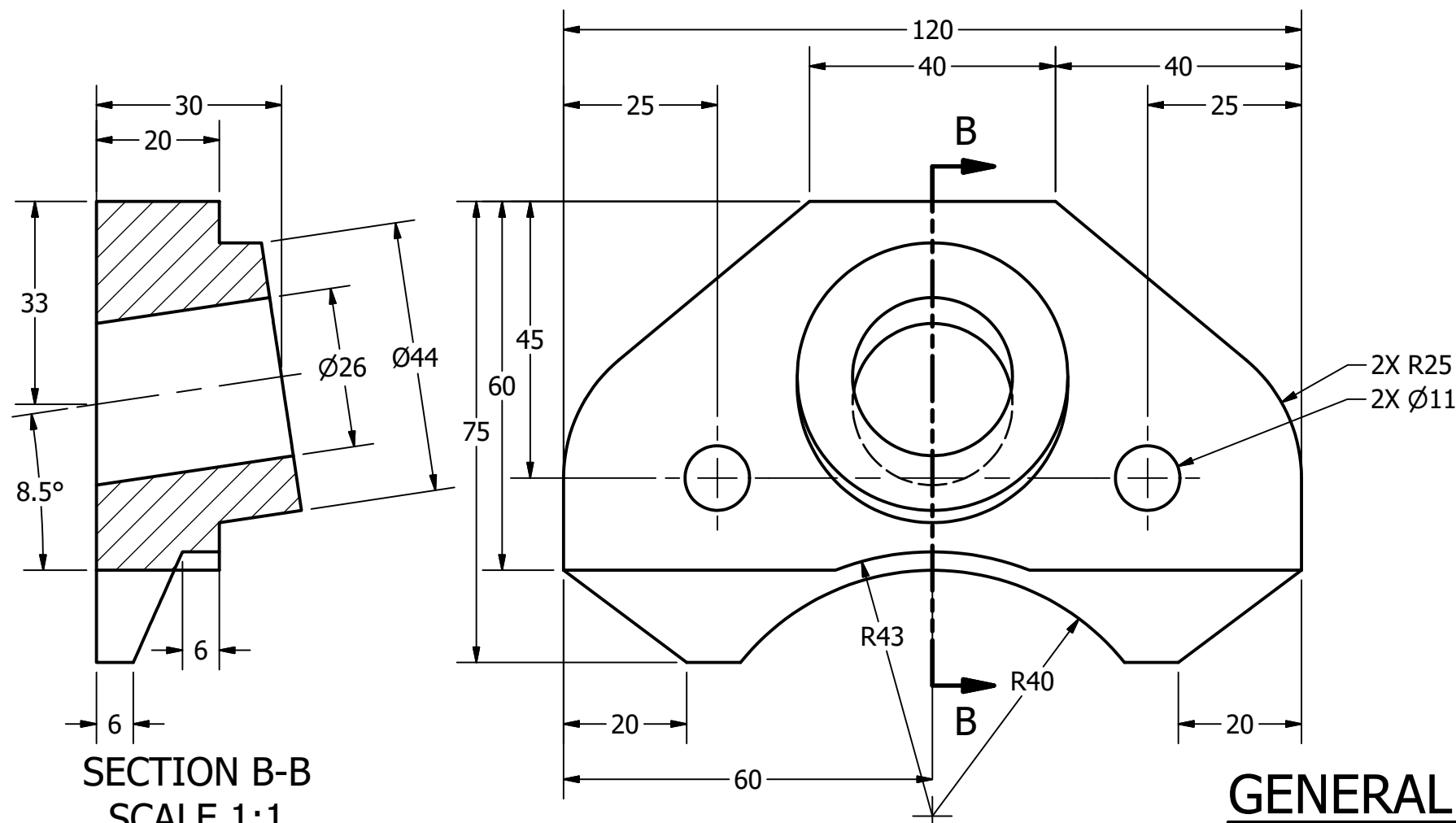
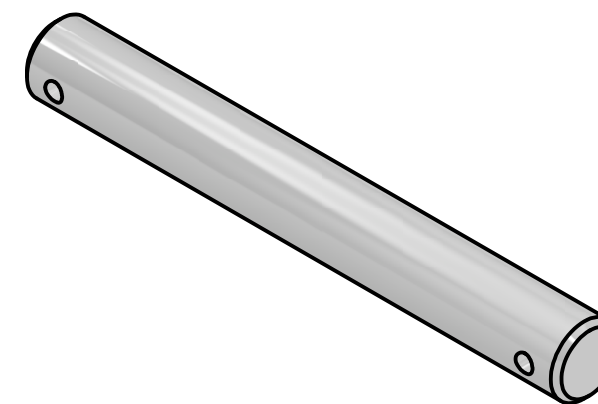


DIGITAL DESIGN  
GRAPHICS  
TECHNOLOGY

WWW.DDGT.NET



**AXLE  
SCALE 1:2**



**SECTION B-B  
SCALE 1:1**

**GUIDE  
SCALE 1:1**

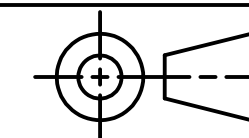
**GENERAL NOTES:**

TROLLEY TO BE MOUNTED ON AN S200 X 34 BEAM.

ALL CHAMFERS ARE 2 X 2 UNLESS OTHERWISE NOTED.

**LEGEND:**

Ø DIAMETER  
R RADIUS  
° DEGREES



TOLERANCES UNLESS SPECIFIED:  
DECIMAL INCHES  
X = ±.020  
XX = ±.010  
XXX = ±.005  
FRACTIONAL ±1/64"  
ANGLES ±1 DEGREE  
SURFACES 32✓

CLASS: DDGT 120

ASSIGNMENT #: 70

INVENTOR DRAWING NAME:  
TROLLEY

FIG #: 14-83

MANAGER: G. STROMMEN

DRAFTER: J. JORDAN

DATE: 12/10/2025

SCALE: AS NOTED

PAGE #: 5 OF 6

# GENERAL NOTES:

TROLLEY TO BE MOUNTED ON AN S200 X 34 BEAM.

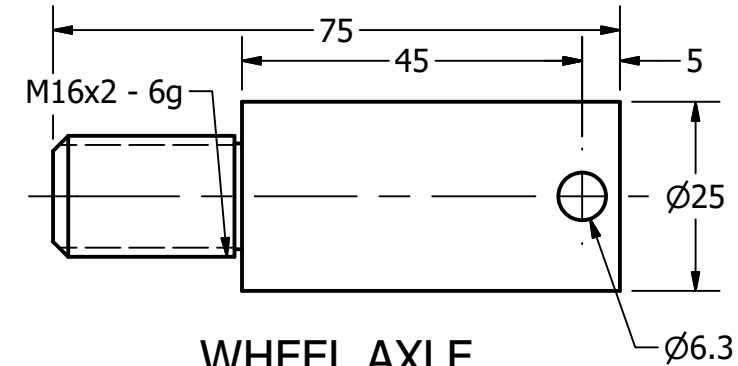
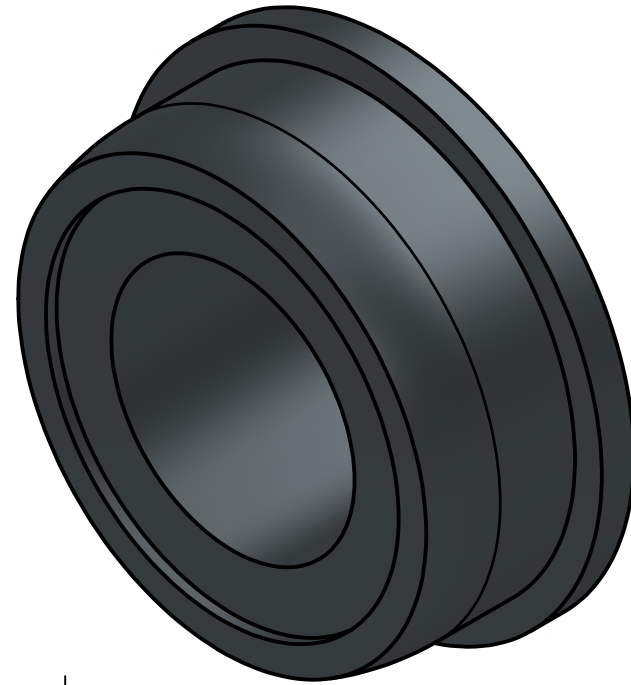
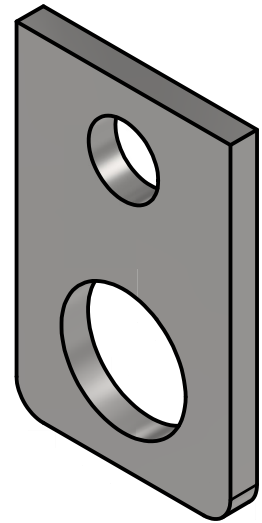
ALL CHAMFERS ARE 2 X 2 UNLESS OTHERWISE NOTED.

PARTS LIST		
ITEM	QTY	PART NUMBER
3	1	HOOK
5	4	WHEEL
6	4	WHEEL AXLE

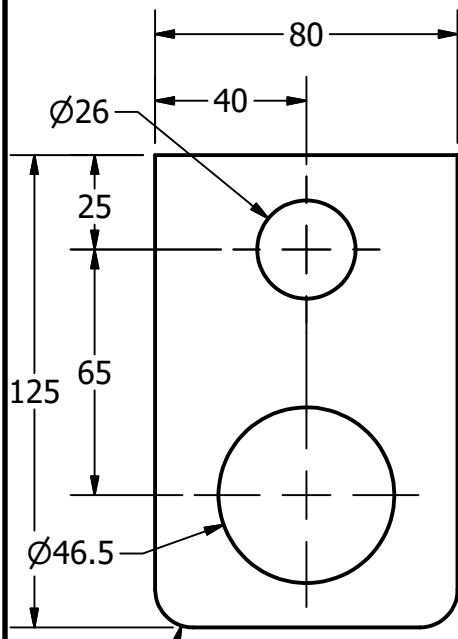
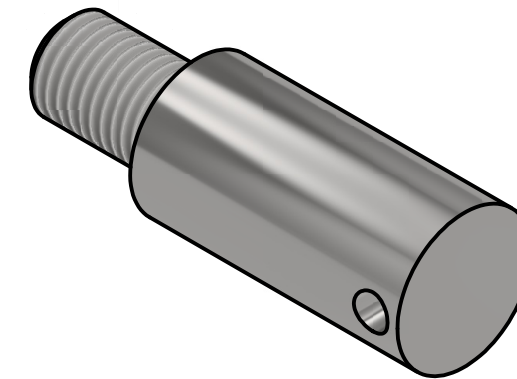


DIGITAL DESIGN  
GRAPHICS  
TECHNOLOGY

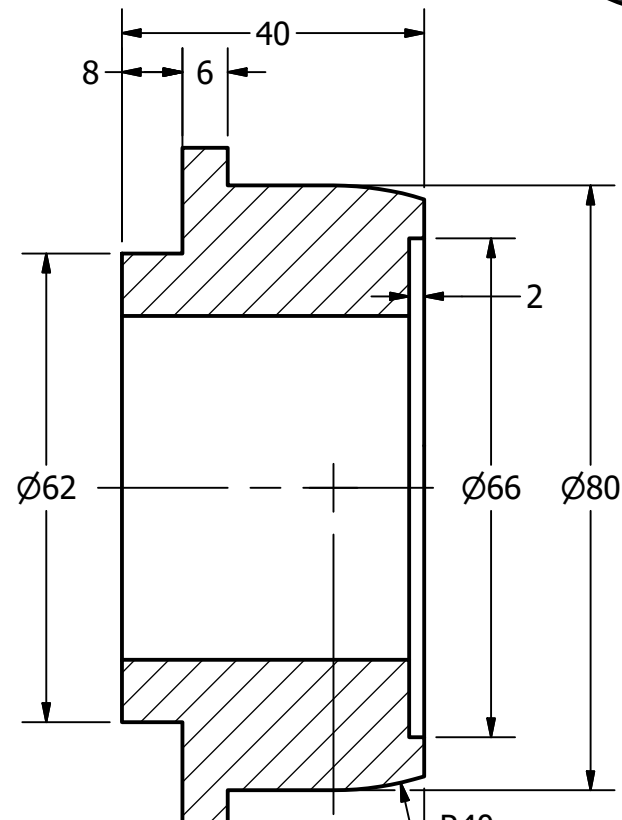
WWW.DDGT.NET



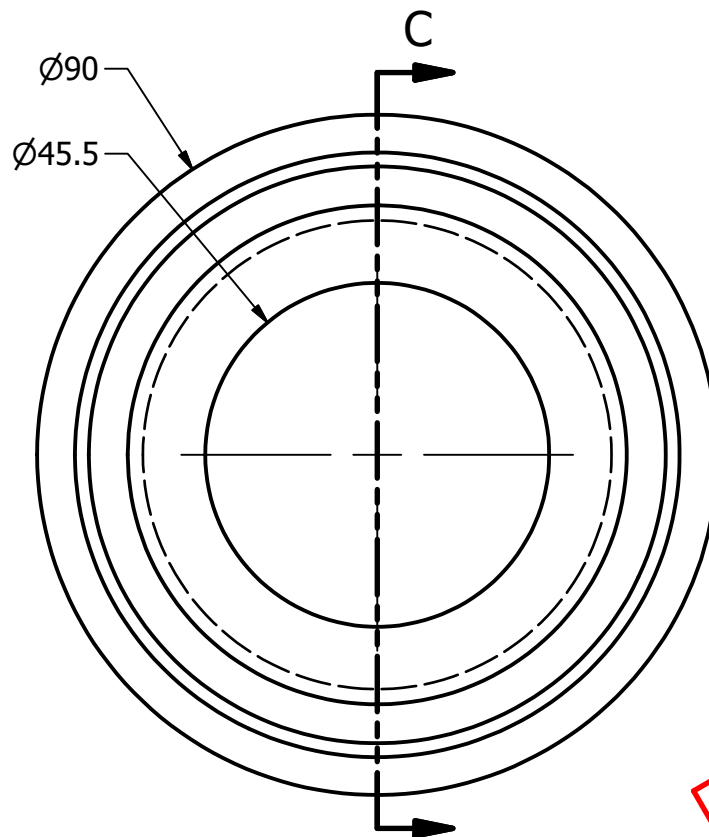
WHEEL AXLE  
SCALE 1 : 1



HOOK  
SCALE 1 / 2



SECTION C-C  
SCALE 1 : 1

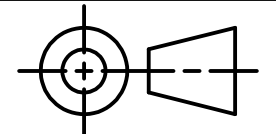


WHEEL  
SCALE 1 : 1

**METRIC**

## LEGEND:

Ø DIAMETER  
R RADIUS  
° DEGREES



TOLERANCES UNLESS SPECIFIED:  
DECIMAL INCHES  
X = ±.020  
XX = ±.010  
XXX = ±.005  
FRACTIONAL ±1/64"  
ANGLES ±1 DEGREE  
SURFACES 32✓

CLASS: DDGT 120

ASSIGNMENT #: 70

INVENTOR DRAWING NAME:  
TROLLEY

FIG #: 14-83

MANAGER: G. STROMMEN

DRAFTER: J. JORDAN

DATE: 12/10/2025

SCALE: AS NOTED

PAGE #: 6 OF 6